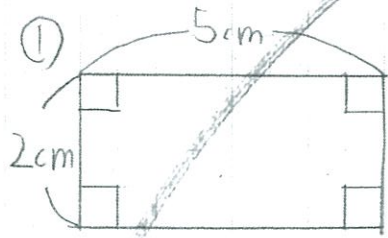


1/30

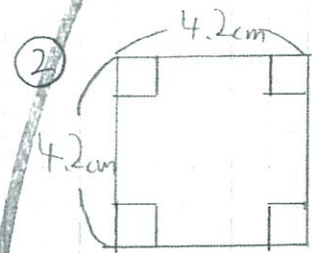
午後 時~3時

★ 次の面積を求めましょう。



$$\text{式 } 2 \times 5 = 10$$

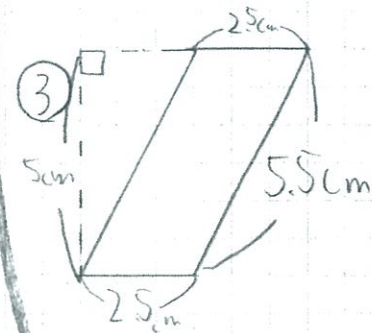
A. 10 cm^2



$$\begin{array}{r} 4.2 \\ \times 4.2 \\ \hline 168 \\ 1764 \\ \hline 1764 \end{array}$$

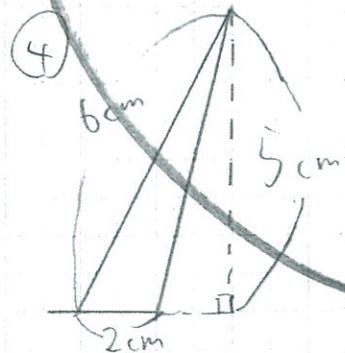
$$\text{式 } 4.2 \times 4.2 = 17.64$$

A. 17.64 cm^2



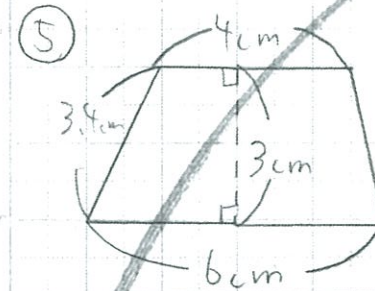
$$\text{式 } 25 \times 5 = 125$$

A. 125 cm^2



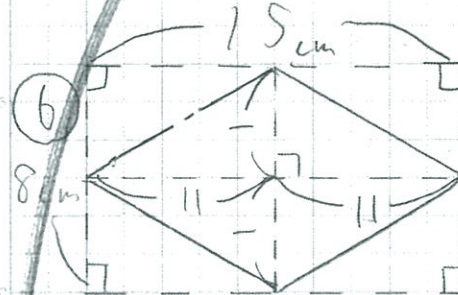
$$\text{式 } 2 \times 5 \div 2 = 5$$

A. 5 cm^2



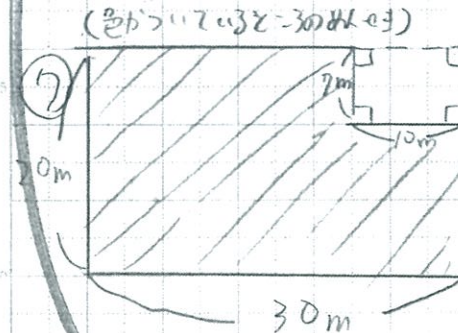
$$\begin{aligned} \text{式 } (4 + 6) \times 3 \div 2 \\ = 15 \end{aligned}$$

A. 15 cm^2



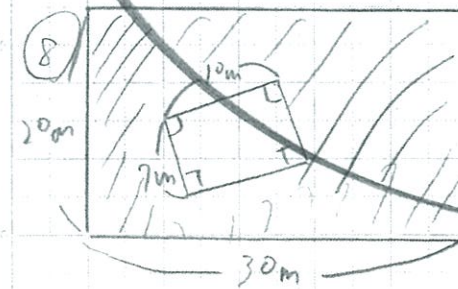
$$\text{式 } 8 \times 15 \div 2 = 60$$

A. 60 cm^2



$$\begin{aligned} \text{式 } 20 \times 30 - 7 \times 10 \\ = 530 \end{aligned}$$

A. 530 m^2



$$\begin{aligned} \text{式 } 20 \times 30 - 7 \times 10 \\ = 530 \end{aligned}$$

A. 530 m^2

今までの図形の面積の学習に
コツコツと取り組んでいていいですね。